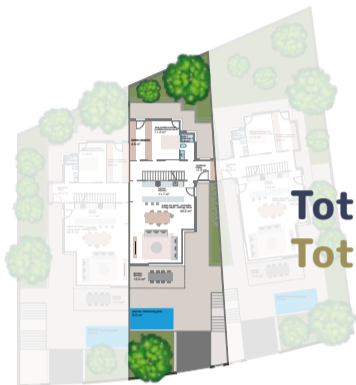


# RENOIR 26

UN ESPACIO ÚNICO  
EN CAMBRILS  
A UNIQUE SPACE  
IN CAMBRILS



## Vivienda Central Center House



Total parcela: 293,97 m<sup>2</sup>  
Total plot: 293.97 m<sup>2</sup>

### PLANTA BAJA

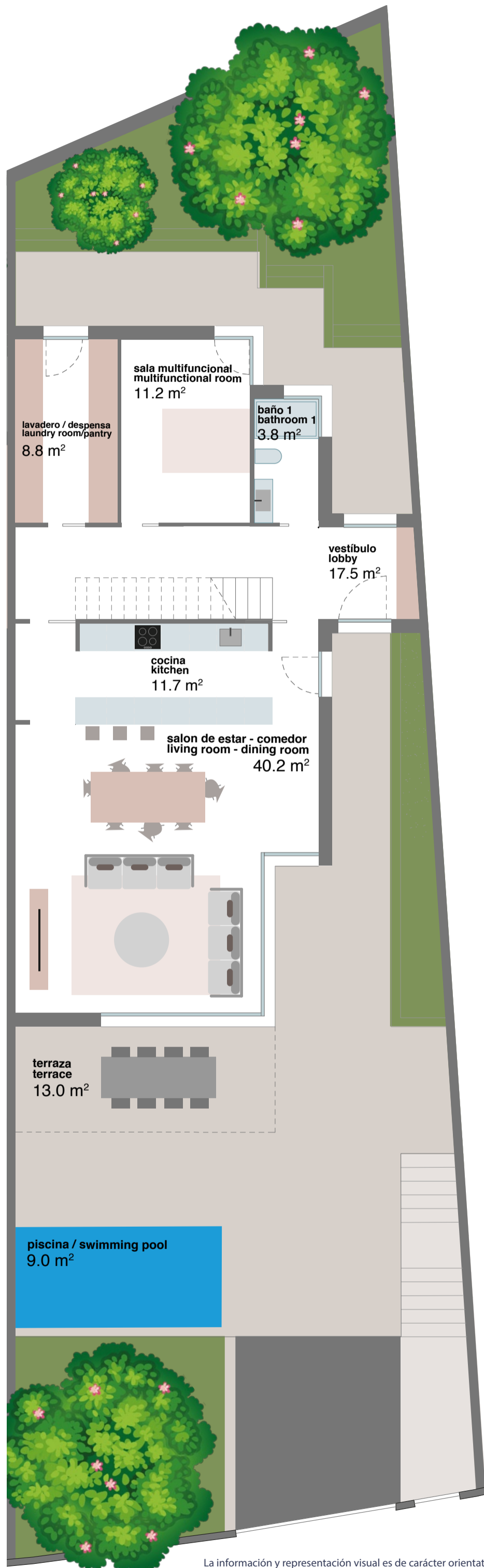
Vestíbulo: 17,5 m<sup>2</sup>  
Baño 1: 3,8 m<sup>2</sup>  
Sala: 11,20 m<sup>2</sup>  
Lavadero - despensa: 8,8 m<sup>2</sup>  
Cocina: 11,7 m<sup>2</sup>  
Sala comedor: 40,2 m<sup>2</sup>

Total útil: 93,2 m<sup>2</sup>  
Total construida: 106,1 m<sup>2</sup>

### GROUND FLOOR

Lobby: 17.5 m<sup>2</sup>  
Bathroom1: 3.8 m<sup>2</sup>  
Hall: 11.20 m<sup>2</sup>  
Laundry room - pantry: 8.8 m<sup>2</sup>  
Kitchen: 11.7 m<sup>2</sup>  
Dining room: 40.2 m<sup>2</sup>

Total useful: 93.2 m<sup>2</sup>  
Total built: 106.1 m<sup>2</sup>

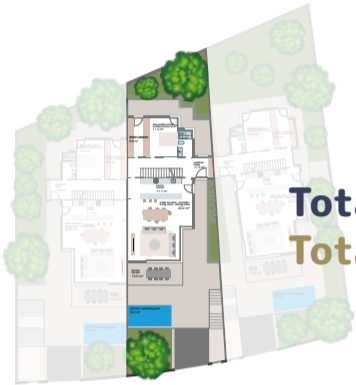


# RENOIR 26

UN ESPACIO ÚNICO  
EN CAMBRILS  
A UNIQUE SPACE  
IN CAMBRILS



## Vivienda Central Center House



Total parcela: 293,97 m<sup>2</sup>  
Total plot: 293.97 m<sup>2</sup>

### PLANTA PRIMERA

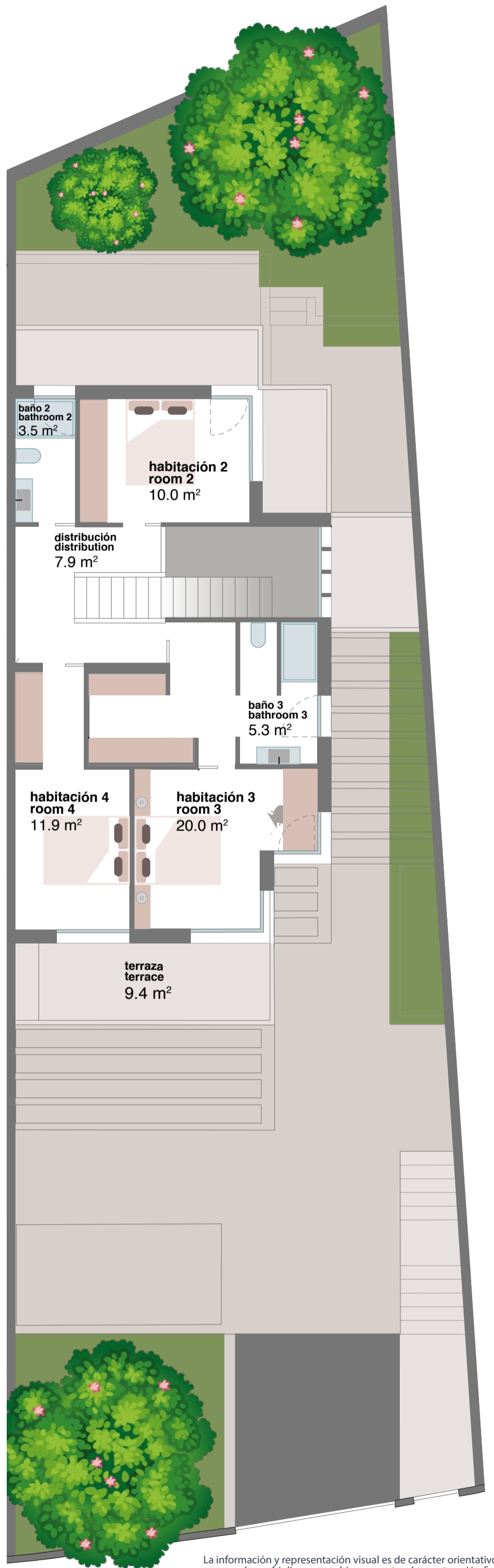
Habitación 2: 10,0 m<sup>2</sup>  
Baño 2: 3,5 m<sup>2</sup>  
Distribuidor: 7,9 m<sup>2</sup>  
Baño 3: 5,3 m<sup>2</sup>  
Habitación 3 (suite): 20,0 m<sup>2</sup>  
Habitación 4: 11,9 m<sup>2</sup>

Total útil: 58,6 m<sup>2</sup>  
Total construida: 72,1 m<sup>2</sup>

### FIRST FLOOR

Bedroom 2: 10.0 m<sup>2</sup>  
Bathroom 2: 3.5 m<sup>2</sup>  
Distributor: 7.9 m<sup>2</sup>  
Bathroom 3: 5.3 m<sup>2</sup>  
Bedroom 3 (suite): 20.0 m<sup>2</sup>  
Bedroom 4: 11.9 m<sup>2</sup>

Total useful: 58.6 m<sup>2</sup>  
Total built: 72.1 m<sup>2</sup>

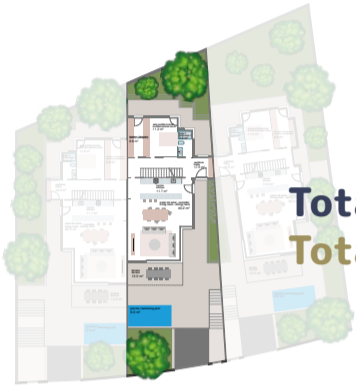


# RENOIR 26

UN ESPACIO ÚNICO  
EN CAMBRILS  
A UNIQUE SPACE  
IN CAMBRILS



## Vivienda Central Center House



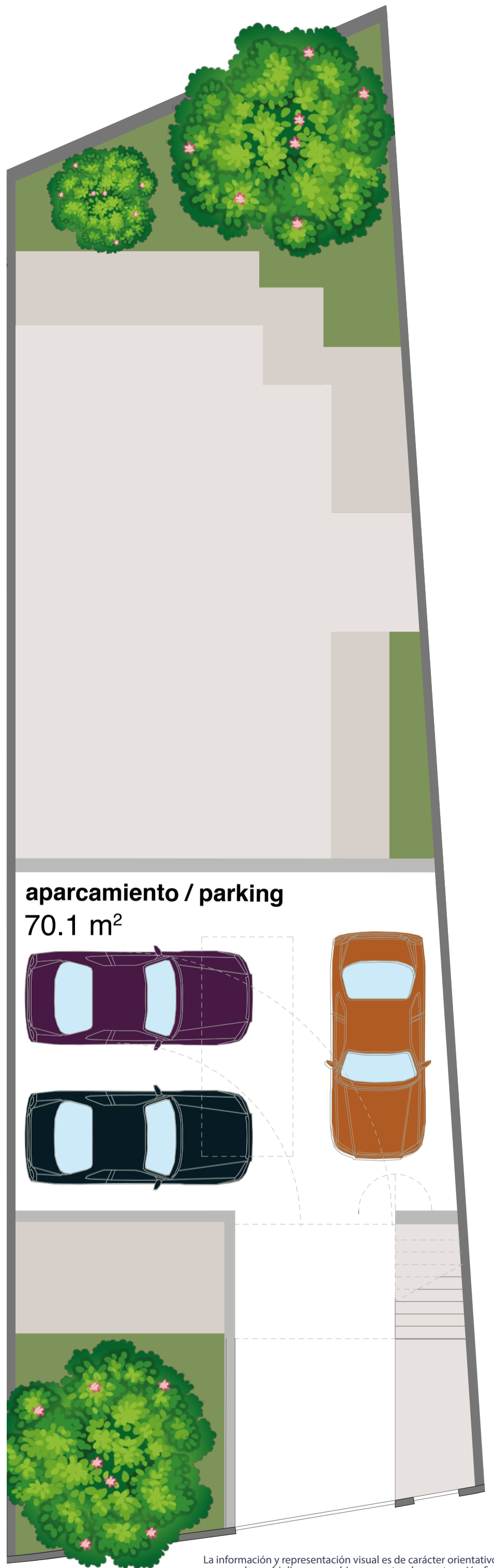
Total parcela: 293,97 m<sup>2</sup>  
Total plot: 293.97 m<sup>2</sup>

### PLANTA GARAJE

Sup. útil: 70,1 m<sup>2</sup>  
Sup. construida: 77,1 m<sup>2</sup>

### GARAGE FLOOR

Useful area: 70.1 m<sup>2</sup>  
Built area: 77.1 m<sup>2</sup>



aparcamiento / parking  
70.1 m<sup>2</sup>

